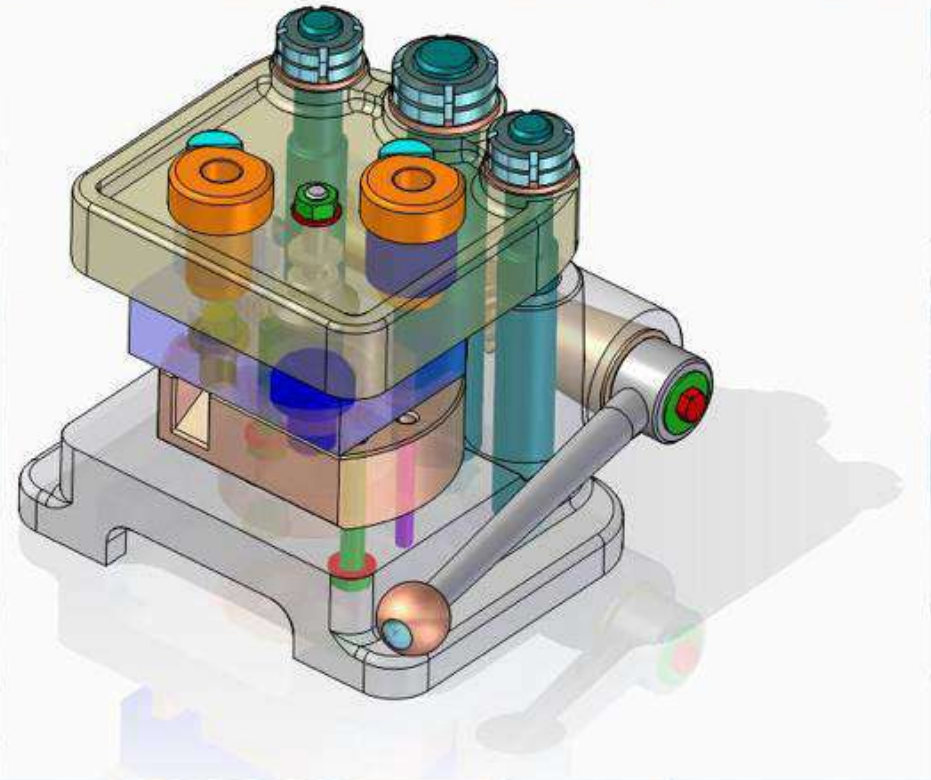
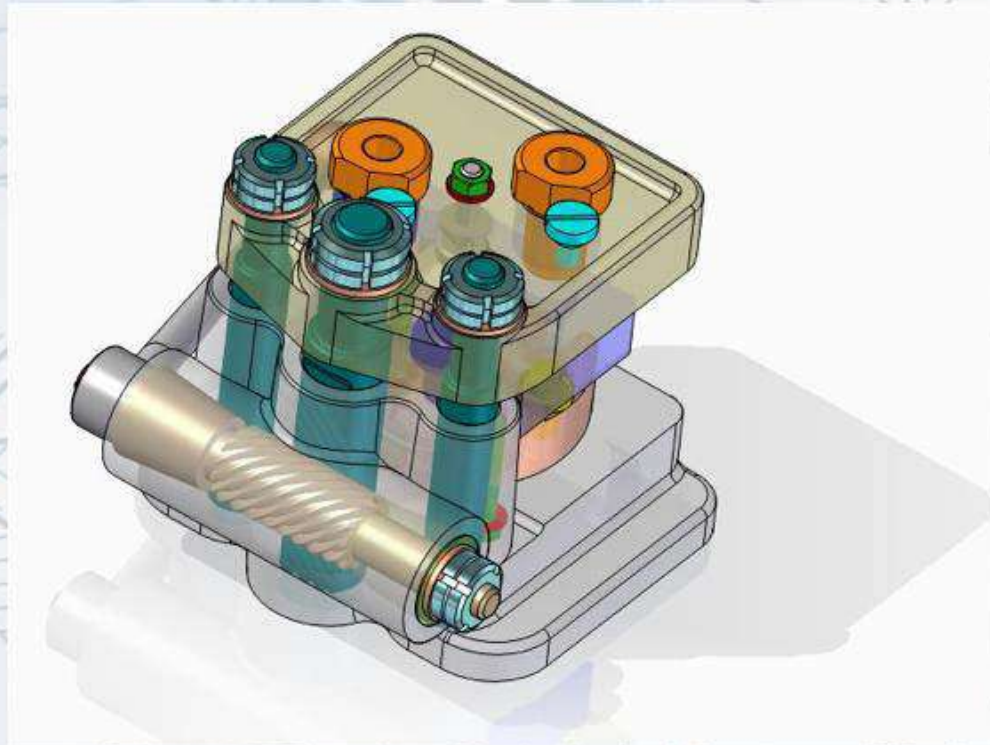
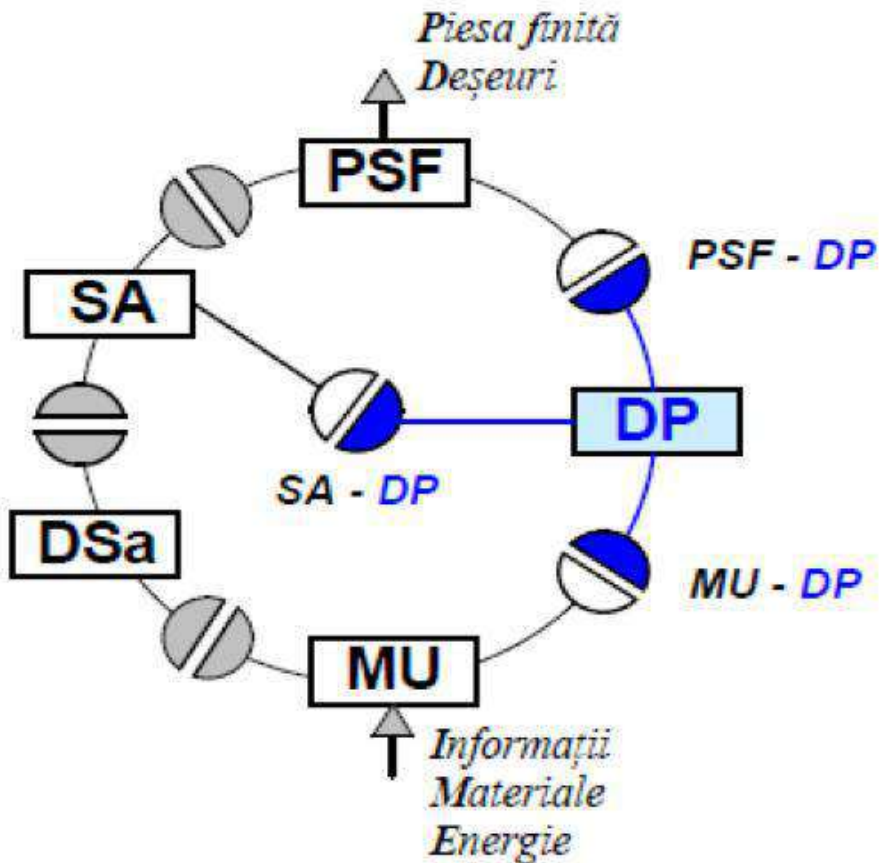


DISPOZITIVE TEHNOLOGICE



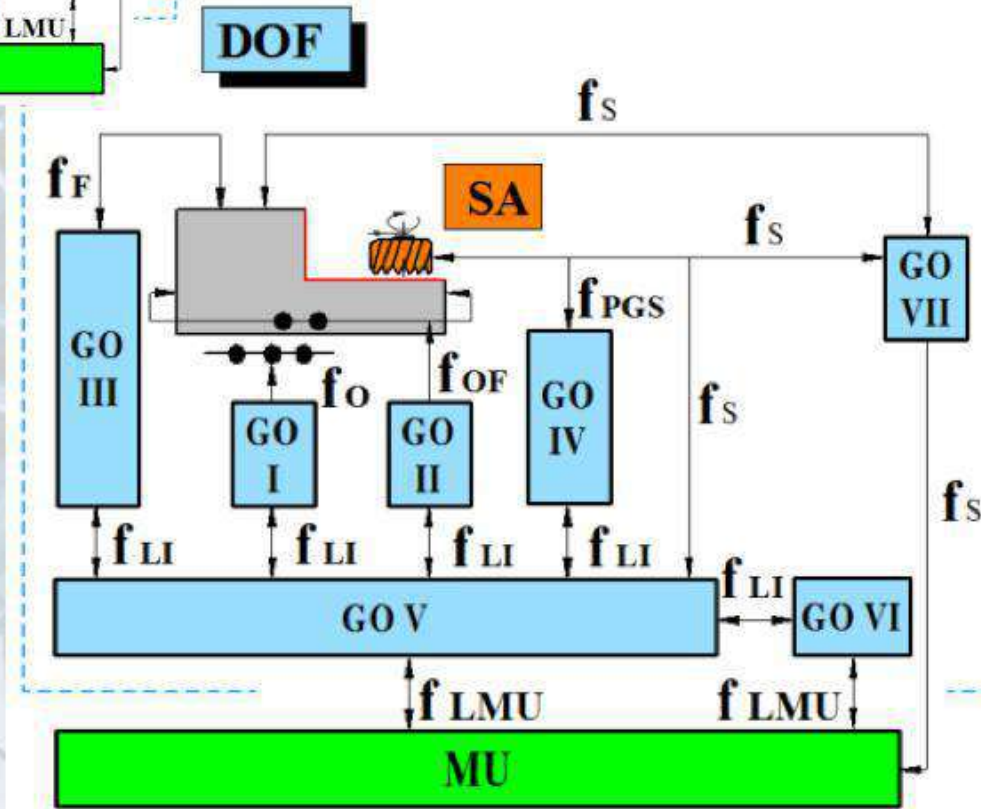
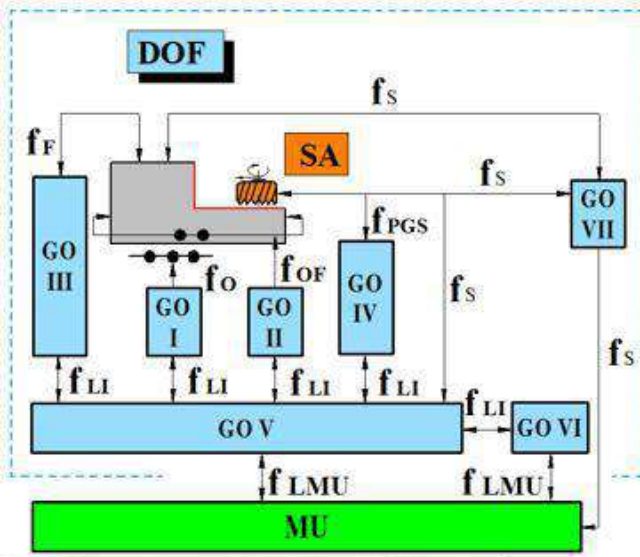
Dispozitivele de orientare și fixare reprezintă un subsistem al **SOTh-CM** (Sistemului Operațional Tehnologic din Construcția de Mașini), format din mai multe **GO** (grupe organologice), organizate conform unui plan și care au drept scop final orientarea și fixarea semifabricatului în condiții tehnico-economice impuse.



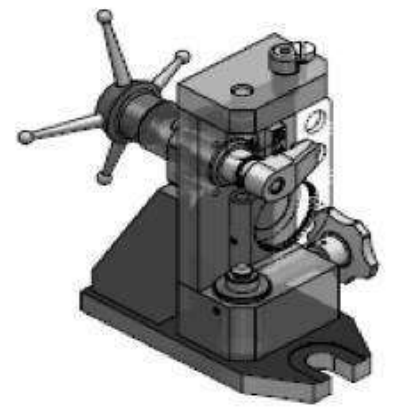
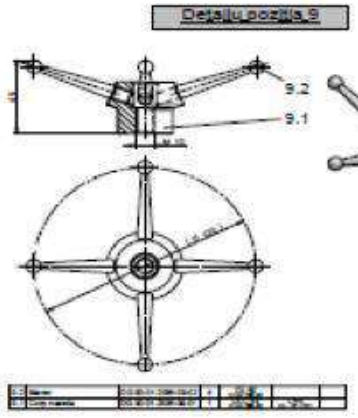
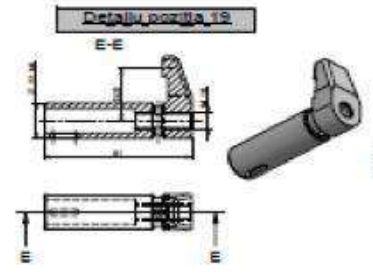
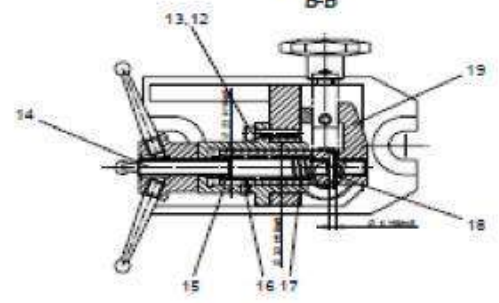
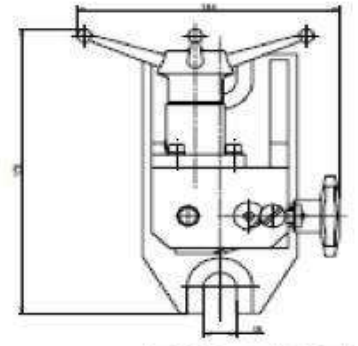
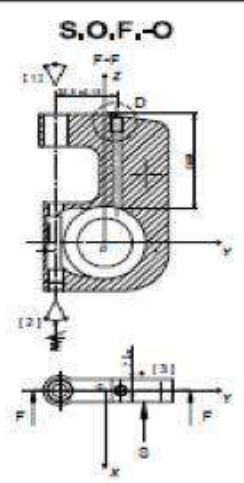
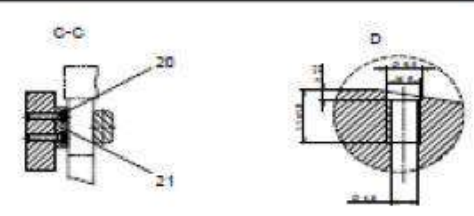
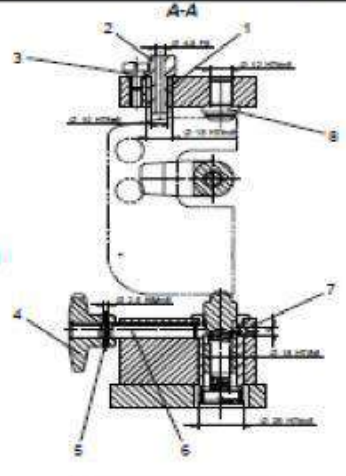
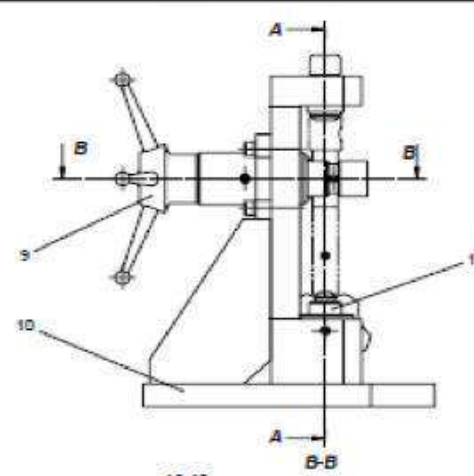
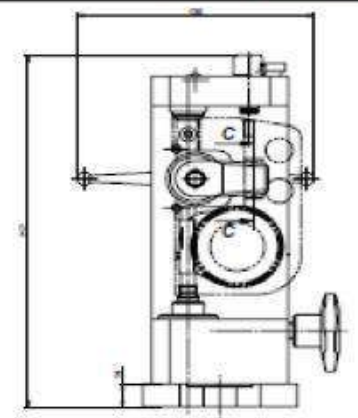
Modelul unui sistem tehnologic de prelucrare STh-P

| <i>Legătura</i> | <i>Funcția asociată</i> |
|-----------------|--|
| PSF - DP | <ul style="list-style-type: none"> ▪ funcția de orientare (a PSF în DP); ▪ funcția de fixare (a PSF în DP); ▪ funcția de orientare și fixare (a PSF în DP). |
| SA - DP | <ul style="list-style-type: none"> ▪ funcția de poziționare . |
| MU - DP | <ul style="list-style-type: none"> ▪ funcția de legătură la mașina unealtă. |
| DP | <ul style="list-style-type: none"> ▪ funcție specifică subsistemului dispozitiv de prelucrare DP. (asigură poziționarea, orientarea și fixarea elementelor componente DP) |
| STh-P | <ul style="list-style-type: none"> ▪ funcție specială de condiționare sistem (a PSF în DP). (se referă la mecanizarea, automatizarea, măsuri NTSM etc.) |

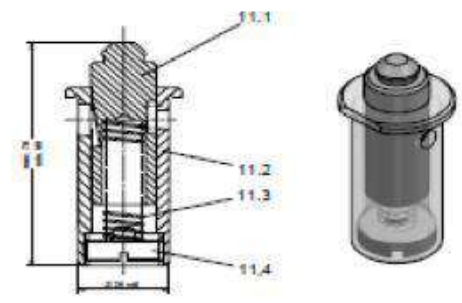
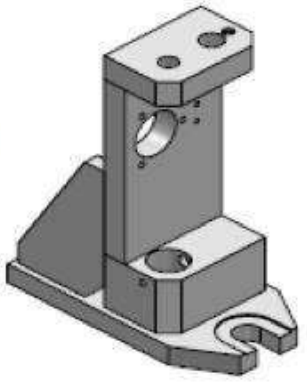
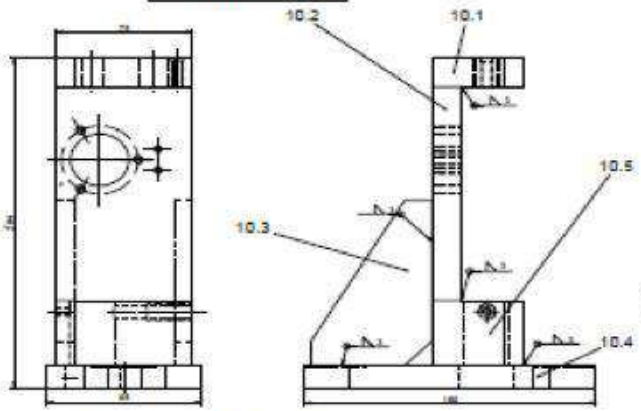
Modelul DOF - grupe organologice, funcții, legături



- f_o** – funcția de orientare (asigură orientarea piesei semifabricat în dispozitiv);
- f_F** – funcția de fixare (asigură fixarea piesei semifabricat în dispozitiv);
- f_{OF}** – funcția de orientare și fixare (asigură orientarea și fixarea piesei semifabricat în dispozitiv);
- f_{PGS}** – funcția de poziționare și ghidare a sculei așchietoare;
- f_{LI}** – funcția legătură internă (care asigură poziționarea și fixarea între componentele dispozitivului);
- f_{LMU}** – funcția de legătură la mașina unealtă;
- f_s** – funcția specială (asigură mecanizarea, automatizarea, protecția muncii etc.).



Detaliu pozitia 10



Detaliu pozitia 11

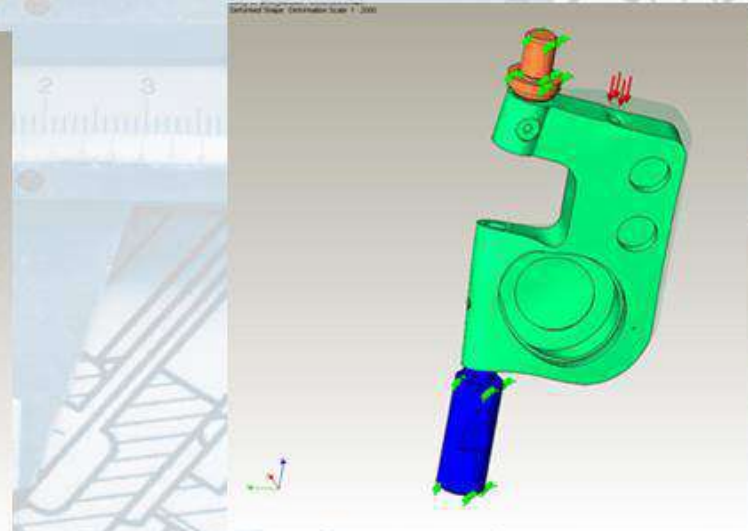
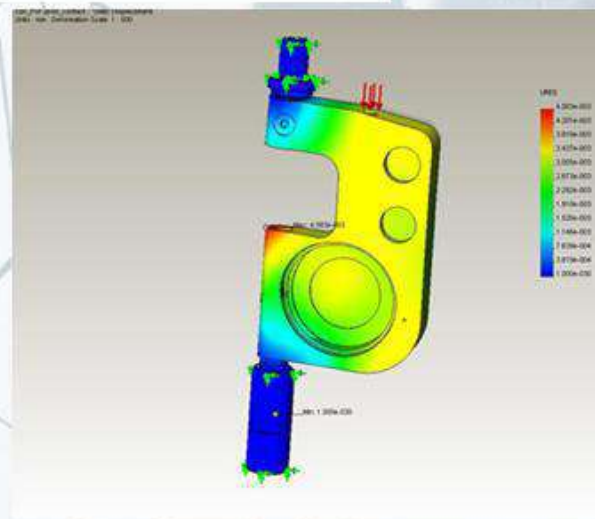
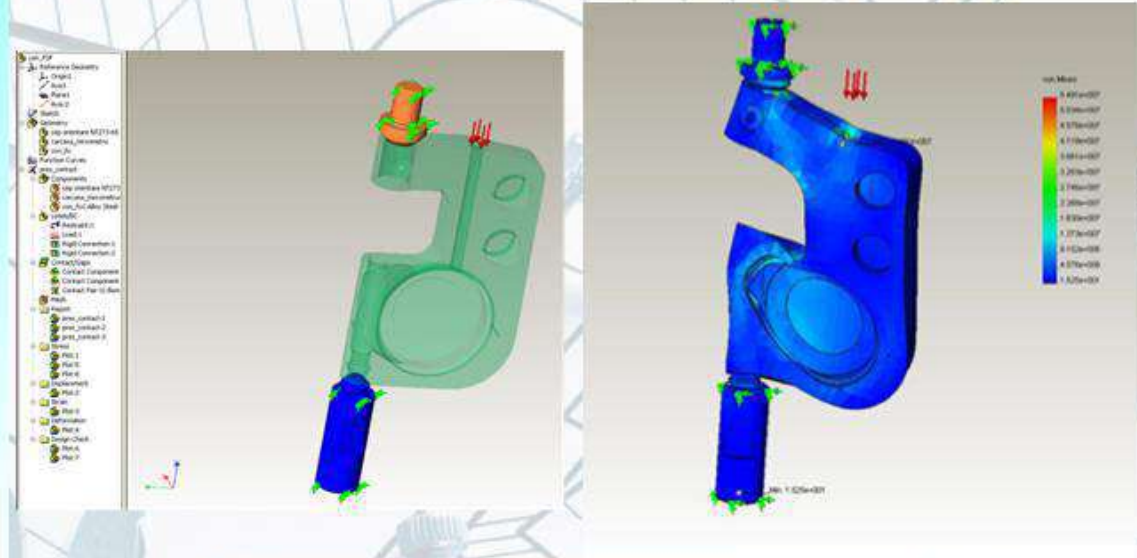
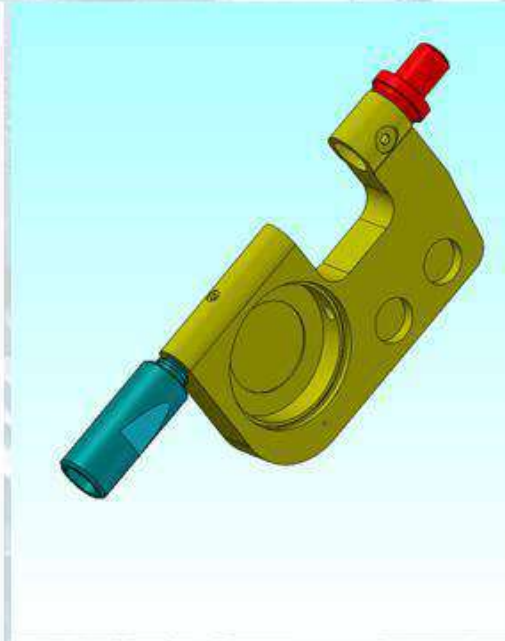
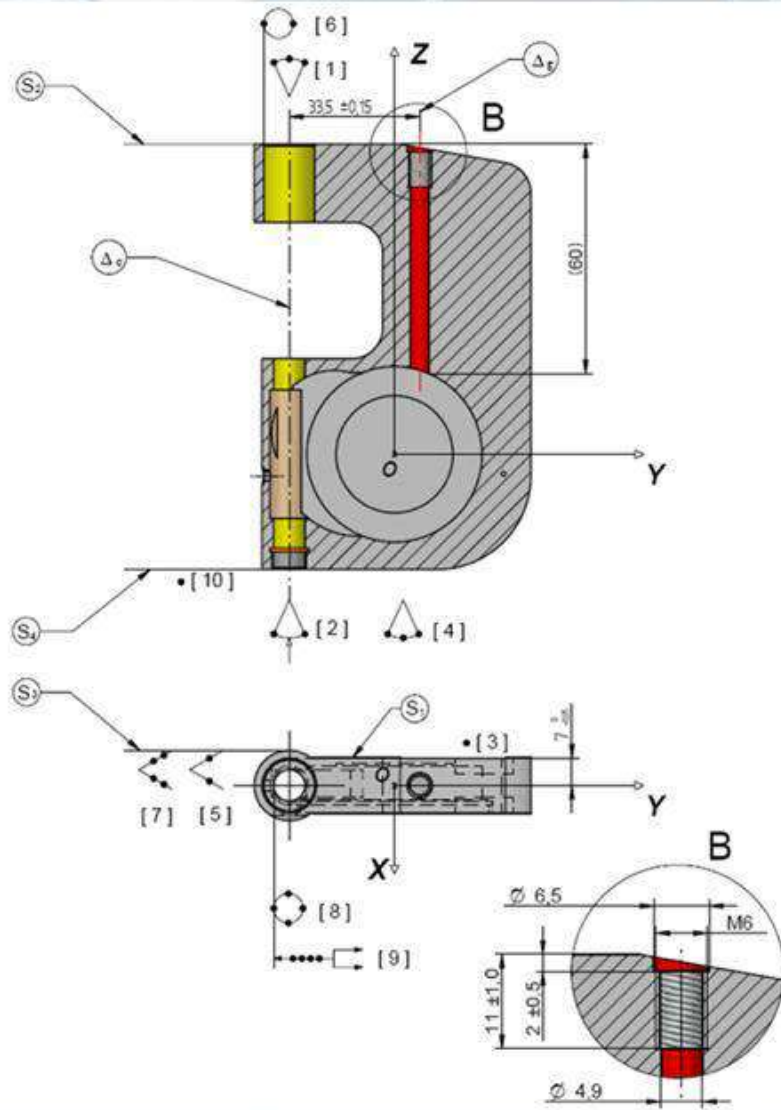


| | | | |
|---|------|------|------|
| 1 | 10.1 | 10.1 | 10.1 |
| 2 | 10.2 | 10.2 | 10.2 |
| 3 | 10.3 | 10.3 | 10.3 |
| 4 | 10.4 | 10.4 | 10.4 |
| 5 | 10.5 | 10.5 | 10.5 |

| | | | |
|---|------|------|------|
| 1 | 11.1 | 11.1 | 11.1 |
| 2 | 11.2 | 11.2 | 11.2 |
| 3 | 11.3 | 11.3 | 11.3 |
| 4 | 11.4 | 11.4 | 11.4 |

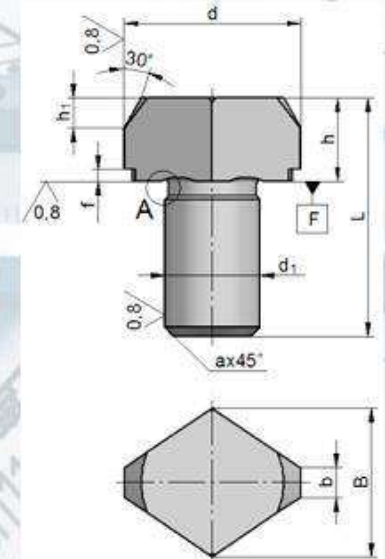
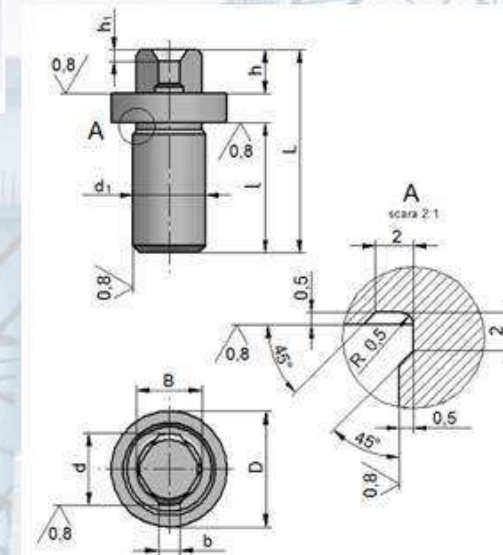
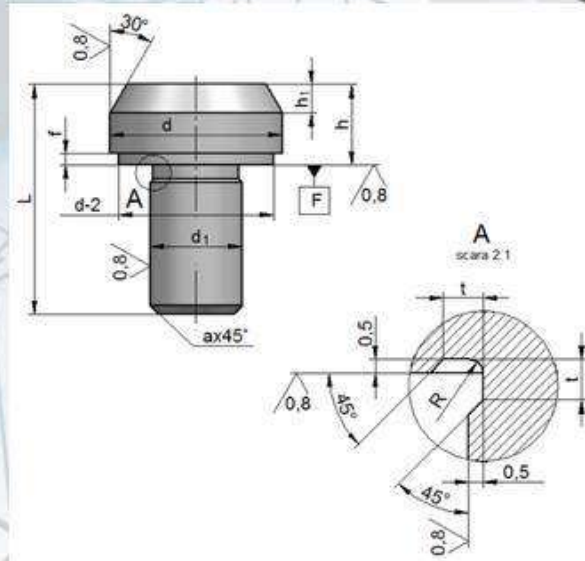
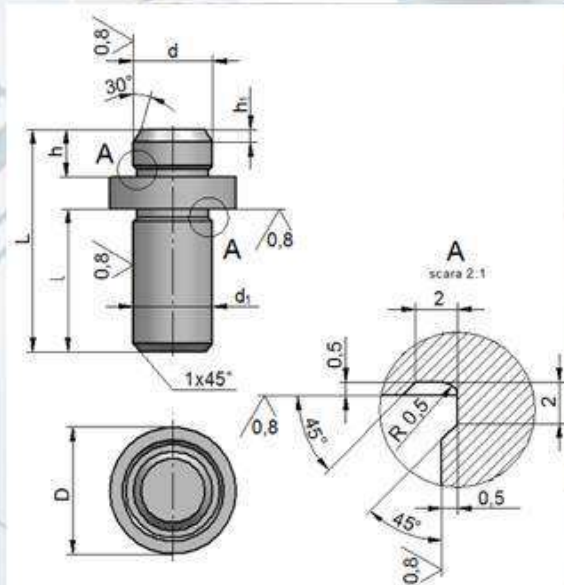
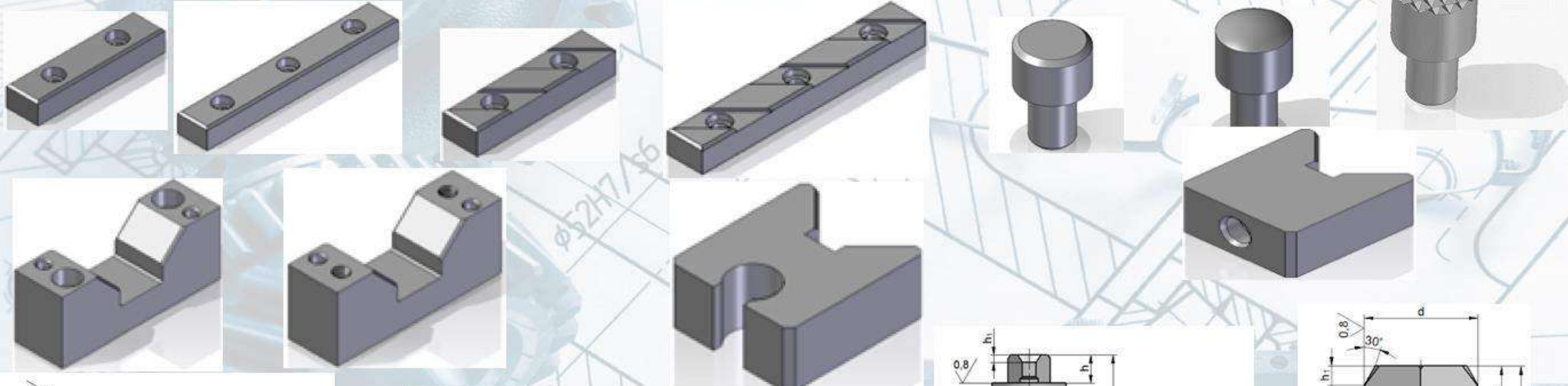
| | | | |
|----|-------|-------|-------|
| 1 | 11.1 | 11.1 | 11.1 |
| 2 | 11.2 | 11.2 | 11.2 |
| 3 | 11.3 | 11.3 | 11.3 |
| 4 | 11.4 | 11.4 | 11.4 |
| 5 | 11.5 | 11.5 | 11.5 |
| 6 | 11.6 | 11.6 | 11.6 |
| 7 | 11.7 | 11.7 | 11.7 |
| 8 | 11.8 | 11.8 | 11.8 |
| 9 | 11.9 | 11.9 | 11.9 |
| 10 | 11.10 | 11.10 | 11.10 |
| 11 | 11.11 | 11.11 | 11.11 |
| 12 | 11.12 | 11.12 | 11.12 |
| 13 | 11.13 | 11.13 | 11.13 |
| 14 | 11.14 | 11.14 | 11.14 |
| 15 | 11.15 | 11.15 | 11.15 |
| 16 | 11.16 | 11.16 | 11.16 |
| 17 | 11.17 | 11.17 | 11.17 |
| 18 | 11.18 | 11.18 | 11.18 |
| 19 | 11.19 | 11.19 | 11.19 |
| 20 | 11.20 | 11.20 | 11.20 |
| 21 | 11.21 | 11.21 | 11.21 |
| 22 | 11.22 | 11.22 | 11.22 |
| 23 | 11.23 | 11.23 | 11.23 |
| 24 | 11.24 | 11.24 | 11.24 |
| 25 | 11.25 | 11.25 | 11.25 |
| 26 | 11.26 | 11.26 | 11.26 |
| 27 | 11.27 | 11.27 | 11.27 |
| 28 | 11.28 | 11.28 | 11.28 |
| 29 | 11.29 | 11.29 | 11.29 |
| 30 | 11.30 | 11.30 | 11.30 |
| 31 | 11.31 | 11.31 | 11.31 |
| 32 | 11.32 | 11.32 | 11.32 |
| 33 | 11.33 | 11.33 | 11.33 |
| 34 | 11.34 | 11.34 | 11.34 |
| 35 | 11.35 | 11.35 | 11.35 |
| 36 | 11.36 | 11.36 | 11.36 |
| 37 | 11.37 | 11.37 | 11.37 |
| 38 | 11.38 | 11.38 | 11.38 |
| 39 | 11.39 | 11.39 | 11.39 |
| 40 | 11.40 | 11.40 | 11.40 |
| 41 | 11.41 | 11.41 | 11.41 |
| 42 | 11.42 | 11.42 | 11.42 |
| 43 | 11.43 | 11.43 | 11.43 |
| 44 | 11.44 | 11.44 | 11.44 |
| 45 | 11.45 | 11.45 | 11.45 |
| 46 | 11.46 | 11.46 | 11.46 |
| 47 | 11.47 | 11.47 | 11.47 |
| 48 | 11.48 | 11.48 | 11.48 |
| 49 | 11.49 | 11.49 | 11.49 |
| 50 | 11.50 | 11.50 | 11.50 |

Secvențe ale procesului de proiectare **DOF** utilizând instrumente **CAD/CAM/CAE**

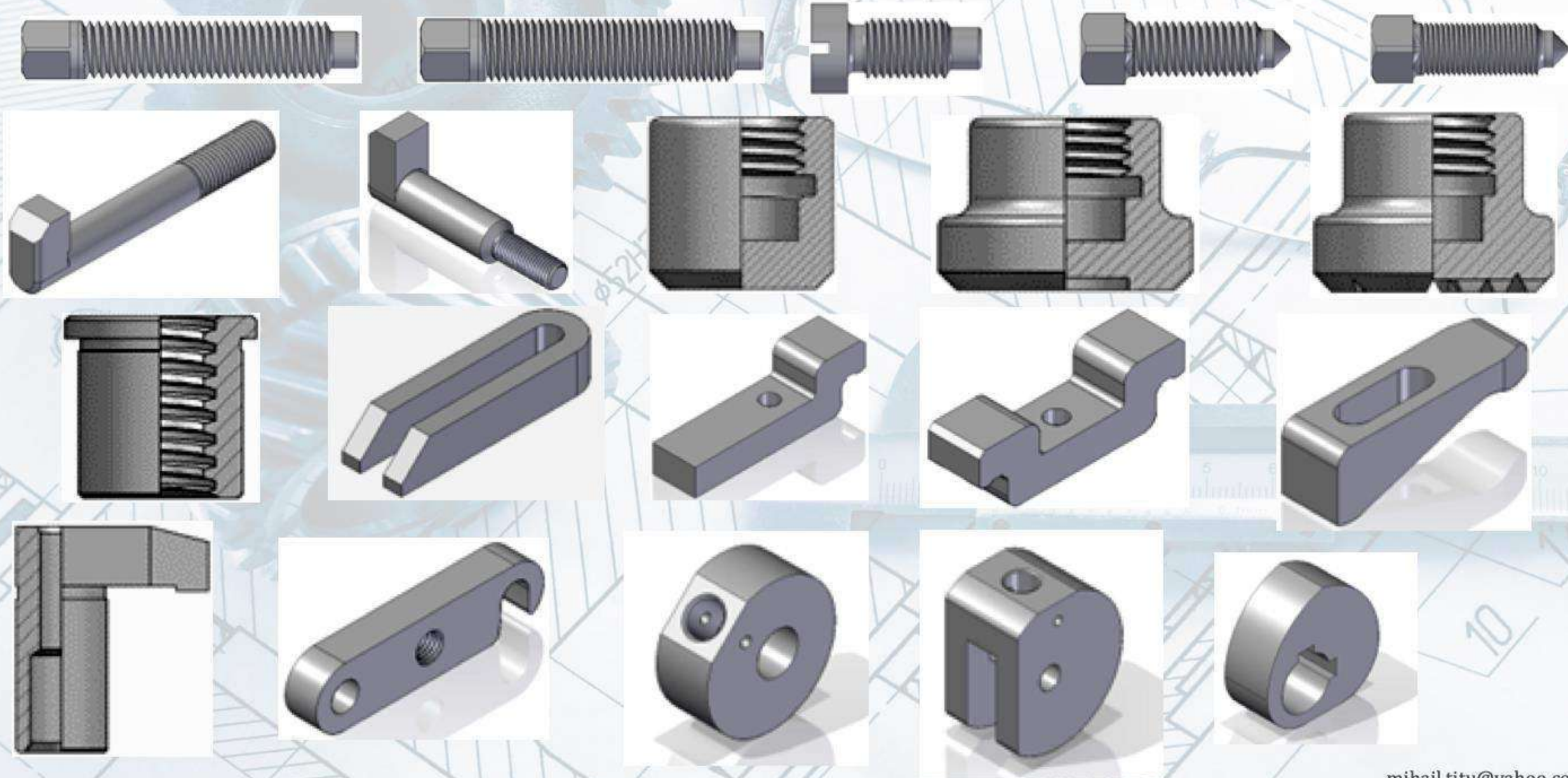


Organologia specifică DOF - elemente normalizate

Elemente de orientare

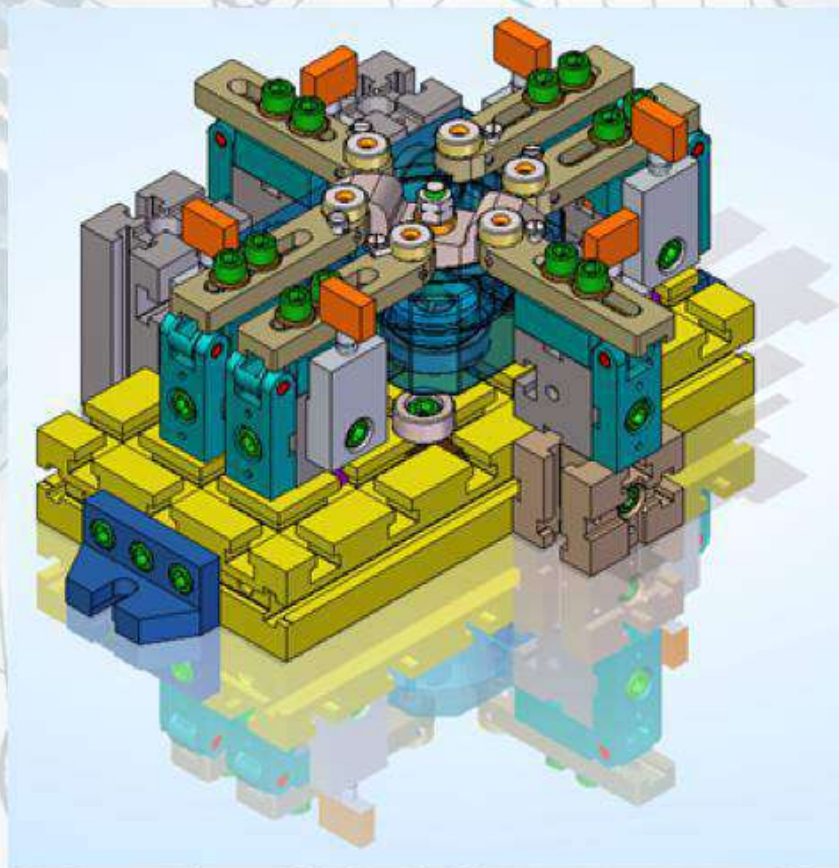
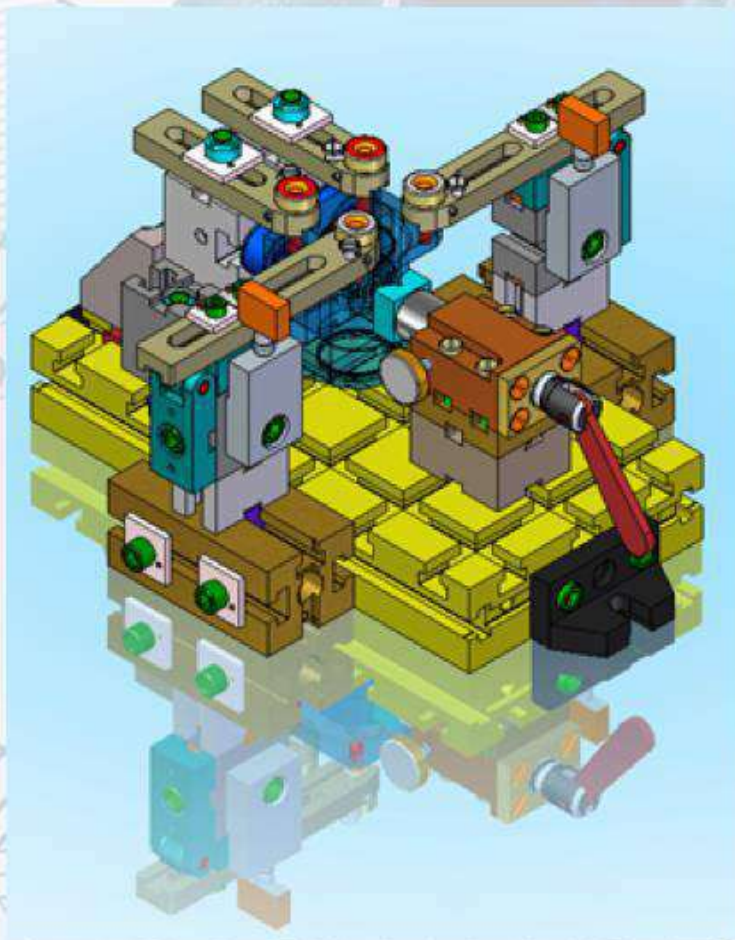


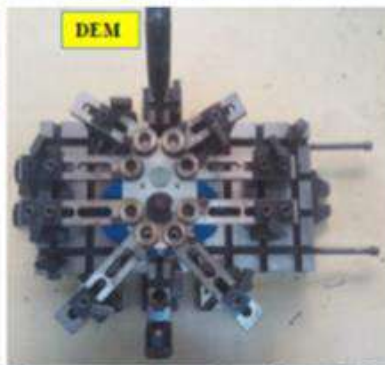
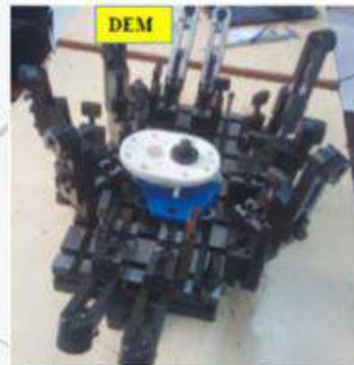
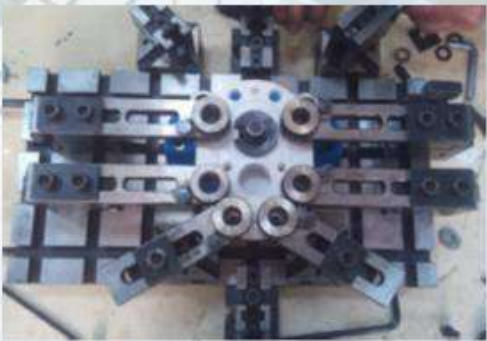
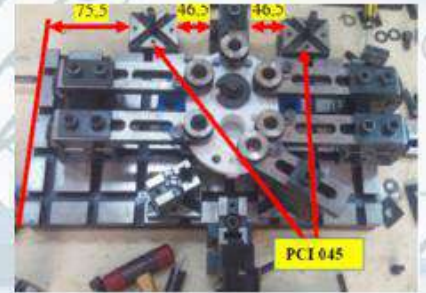
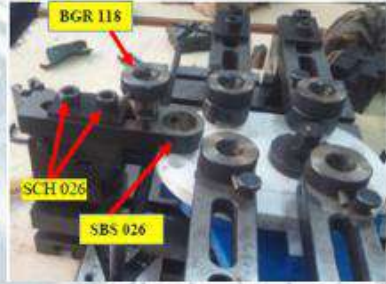
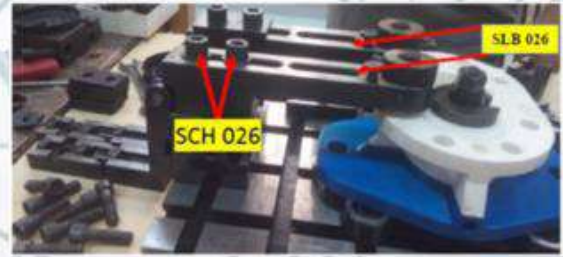
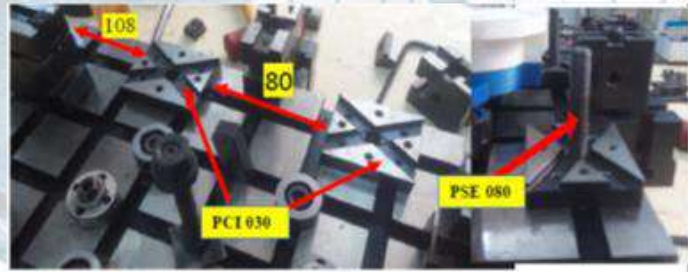
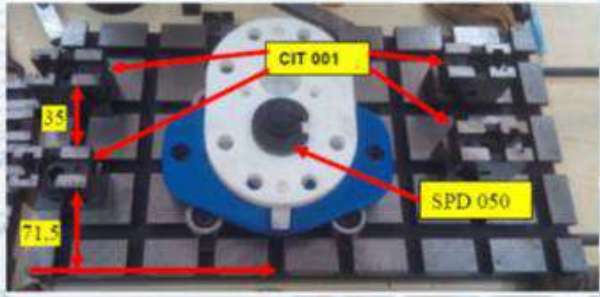
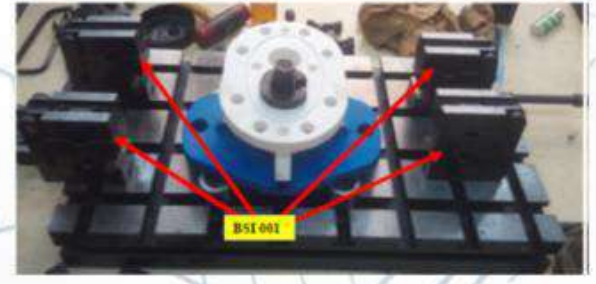
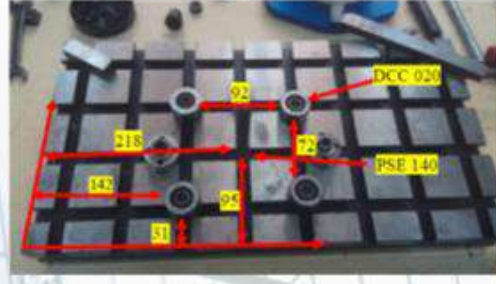
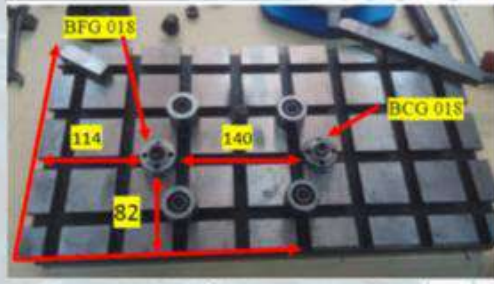
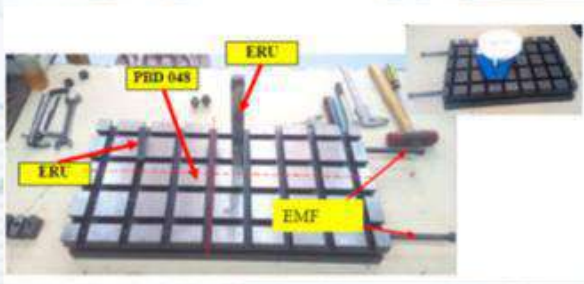
Elemente de fixare



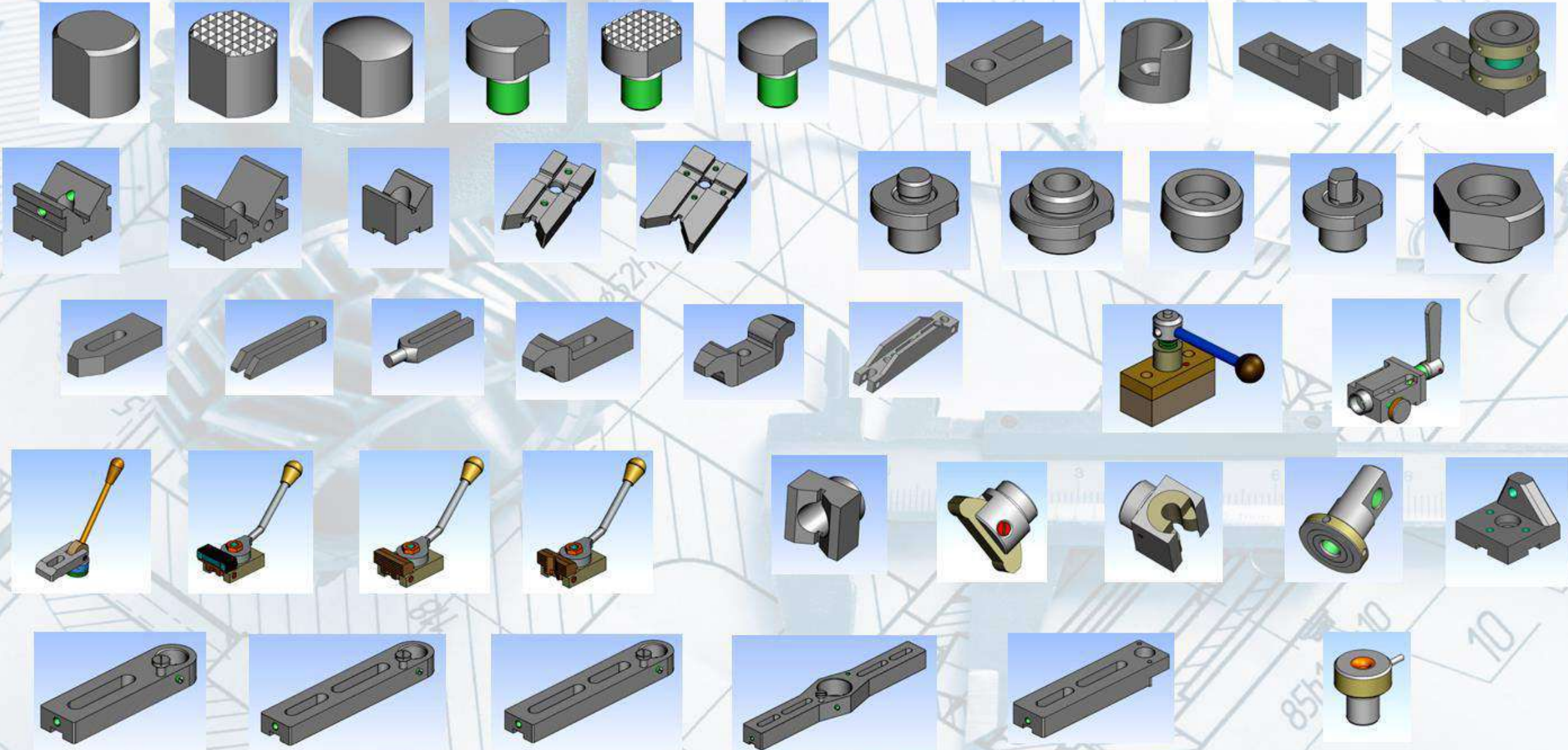
Dispozitive din elemente modulate - DEM

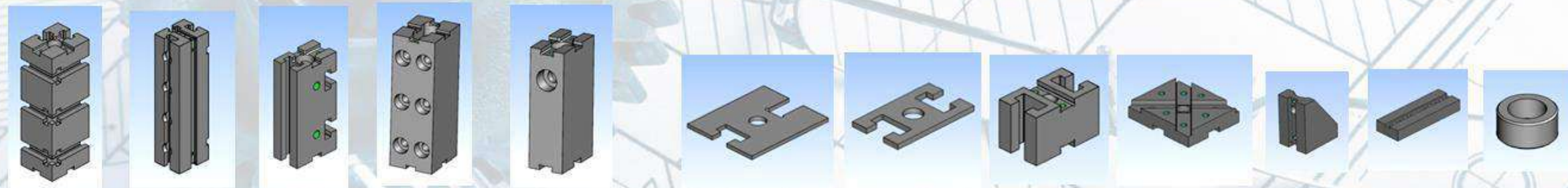
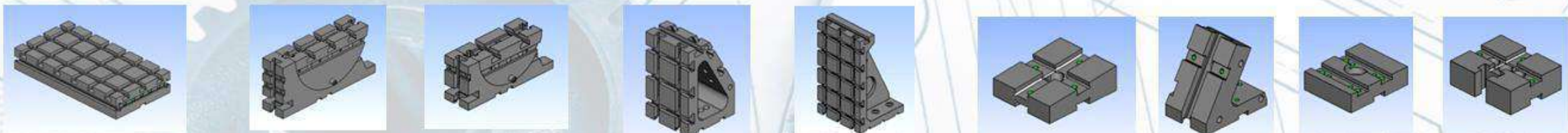
SEM - 64 DISROM



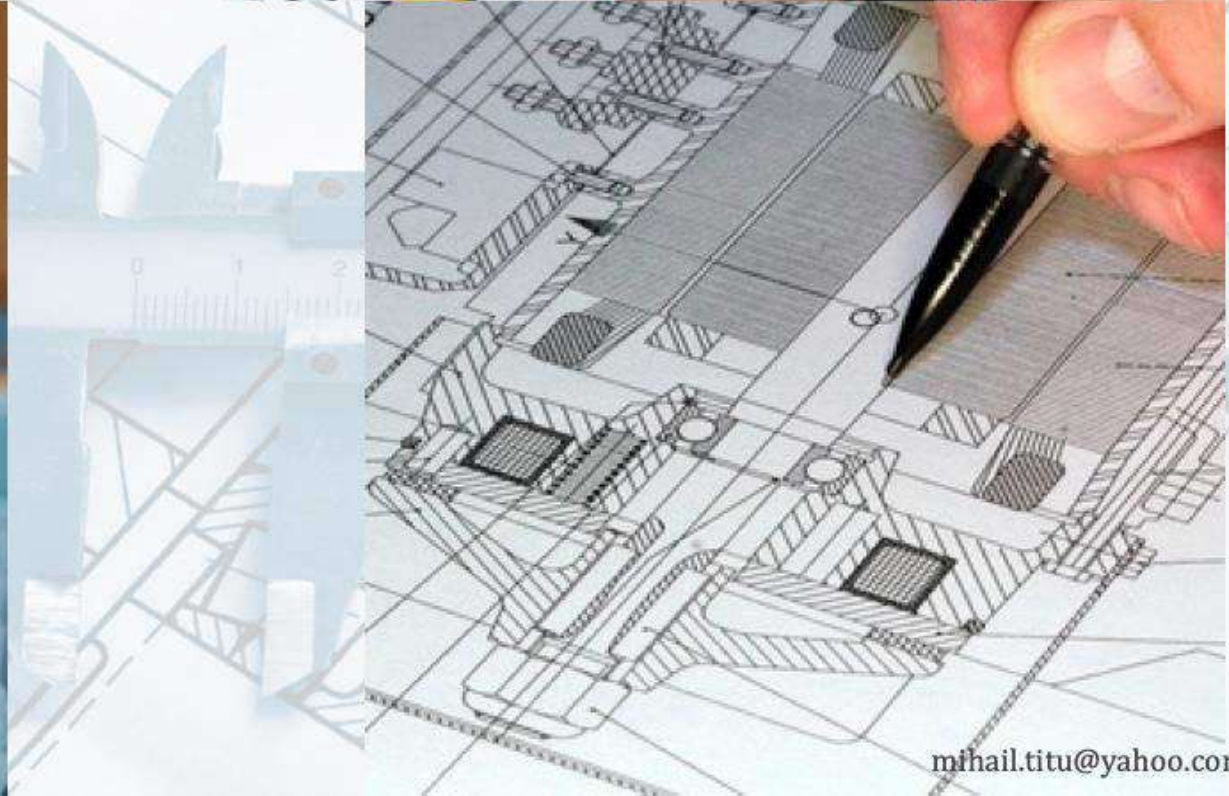
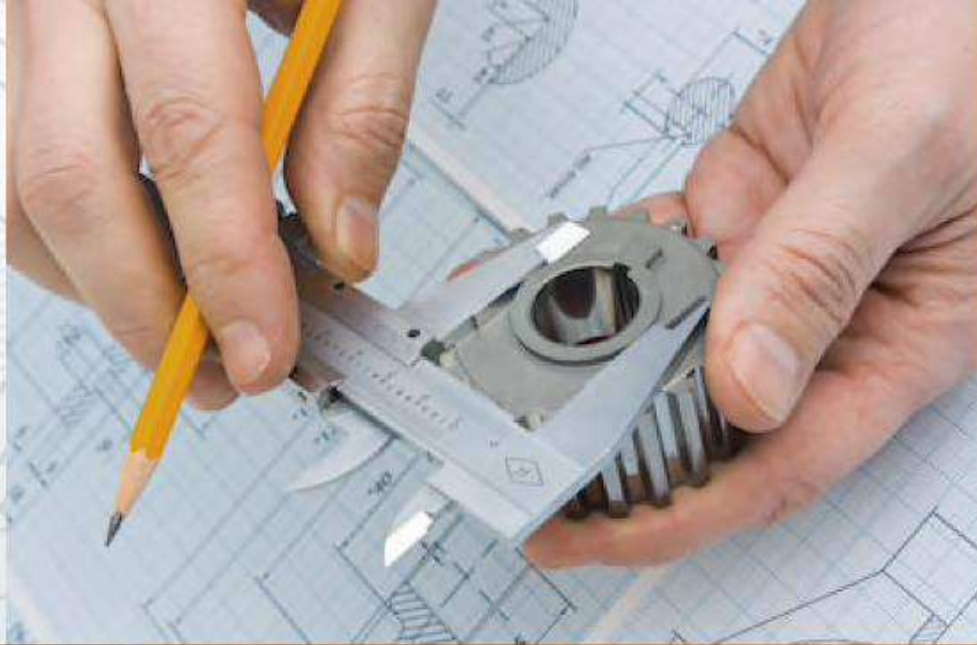


Organologia specifică DEM





- **[ADV] Advanced Machine&Engineering co. www.ame.com**
- **[AMF] Andreas Maier Gmbh, www.amf.de**
- **[WIT] Horst Witte Geratebau. www.vakuumsysteme.de**
- **[BLU] BLUCO Corporation. www.bluco.com**
- **[CAR] Carr Lane Manufacturing Co.www.carrlane.com**
- **[CNC] CNC Technik. www.cnc-technik.com/**
- **[HAL] Erwin Halder KG. www.halder.de**
- **[HIR] Hirschmann Gmbh. www.Hirschmanngmbh.com**
- **[IMA] IMAO Corporation. www.imao.co.jp**
- **[FIX] FixtureWorks. www.fixtureworks.net**
- **[KUR] Kurt Manufacturing, www.kurtworkholding.com**
- **[KIP] Heinrich Kipp Werk. www.kipp.com**
- **[MEA] Measurement Solutions Ltd. www.spcsoftware.co.uk**
- **[NAB] NABEYA Co.,Ltd. www.nabeya.co.jp**
- **[NOR] NORELEM, www.norelem.fr**
- **[PWM] Paul Marino Gauges. Inc. www.pmargage.com**
- **[ROE] ROHM. www.roehm-spannzeuge.com**
- **[ROY] ROYAL WORKHOLDING. www.royalworkholding.com**
- **[RRS] R&R Sales, LLC, www.cmmfixture.com**
- **[STAR] Stark Spannsysteme GmbH, www.stark-inc.com**
- **[STE] STEVENS Engineering Inc. www.stevenseng.com**
- **[TEC] TE-CO. www.te-co.com**
- **[TRI] Triag Precision Tool, www.triag.com**
- **[YUA] YUASA International, www.yuasa-intl.com**





We have the **key competence** to be the interface between product development and production.